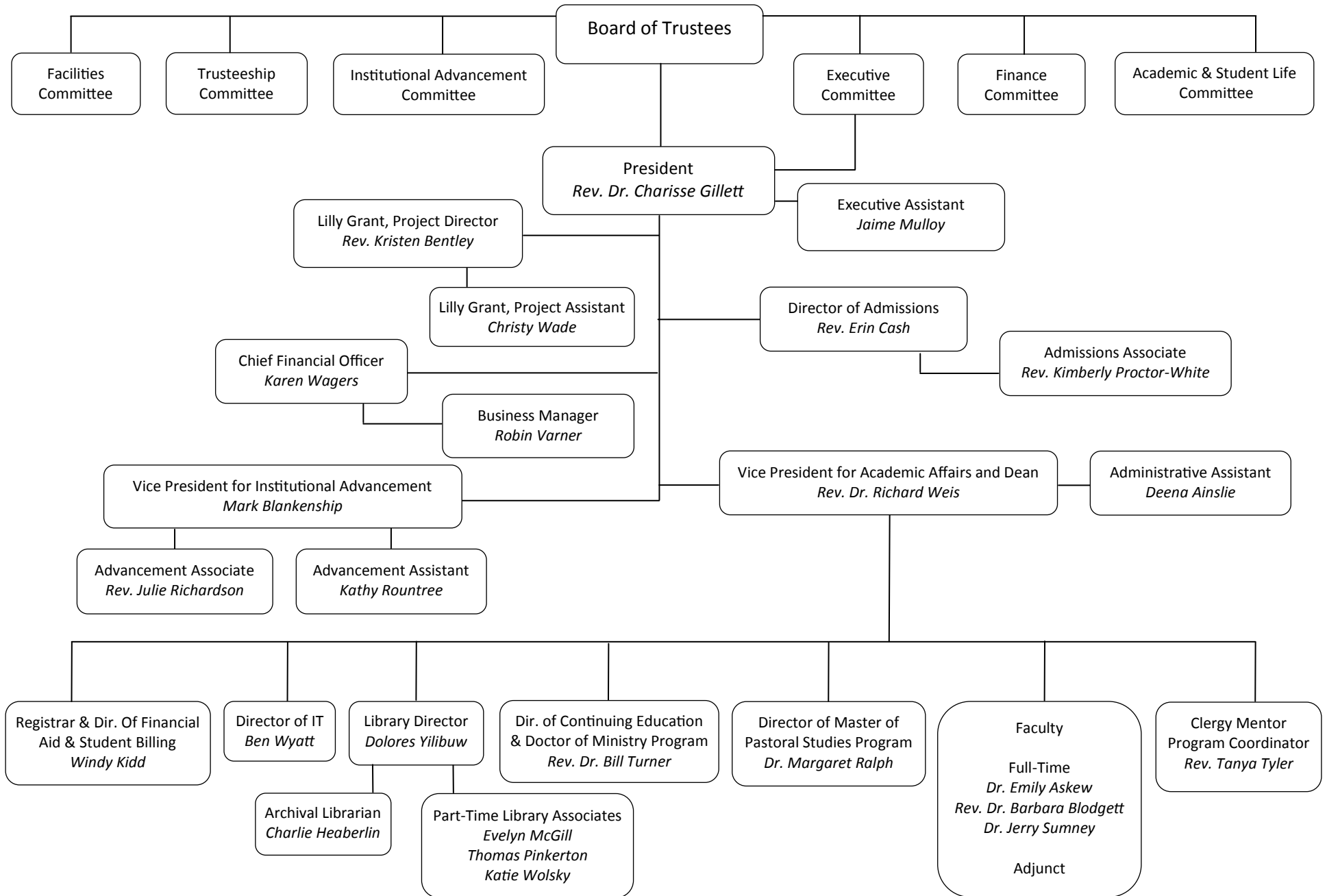




Lexington Theological Seminary

Organizational Chart – 2015



CHIEF FINANCIAL OFFICER

Business Office

Accounting
Investment Records
Payables/Payroll
Purchasing/Receiving
Accounts Receivable
Budget Control
Inventory
Business Computer Operations
Clerical Staff Personnel

Physical Plant

Financial Aid

Student Accounting
Snow Captain

VICE PRESIDENT OF ACADEMIC
AFFAIRS AND DEAN

Faculty Supervision, Support and Evaluation
Educational Programs – Degreed and Non-Degreed
Student Services and Registrar
Student Admission -- Faculty
Field Education and Mentor Program
Bosworth Memorial Library
Instructional Designer/Education Technologist
Student Writing Skills
Continuing Education and D.Min. Program
Assessment, Accreditation, and Licensing

VICE PRESIDENT OF INSTITUTIONAL
ADVANCEMENT

Development

Annual Giving
Church
Private
Endowment
Capital Funds
Planned Giving

Gift Records/Research

Event Management
Public and Church Relations
Alumni Affairs

DIRECTOR OF ADMISSION

Student Recruitment
Marketing